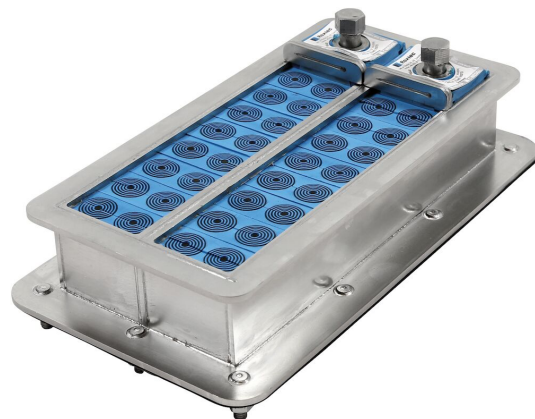




Roxtec HD-genomföringar

Genomföringar med ram i 316L, för hög kabeldensitet.

Roxtec HD-genomföringar är kabeltätningar för krävande och farliga miljöer. De rymmer upp till 32 kablar per öppning. De finns i tre olika storlekar. Kabelgenomföringen har en ram av rostfritt 316L-stål och tätningsmoduler som kan anpassas till en mängd olika kabelstorlekar.



- Gnagarresistent
- Korrosionsresistent
- Låg vikt
- Utrymmeseffektiv
- Möjliggör användning av förterminerade kablar

Produktegenskaper



IP/UL NEMA

Konstruktion för installation



Skåp & kapslingar

Monteringsätt



Bultning

Klassningar & certifikat

Täthet

- IP 66/67, UL/NEMA 4,4X,12,13

Ramdimensioner

mm/kg

Ramvarianterna nedan är ett begränsat urval. Du hittar hela utbudet av ramar och konfigurationer på [roxtec.com](https://www.roxtec.com).

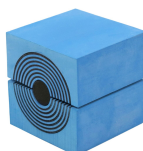
Titel	Ramöppningar	Packningsutrymme	Ytermått WxHxD	Öppningens mått w x h	Vikt	Art. nr
HD 16 FRAME ASSEMBLY AISI 316	1	40 x 160	83.8 x 236 x 60	64(+1/-0.5) x 216(+1/-0.5)	1.6	193084
HD 32 FRAME ASSEMBLY AISI316	2	40 x 160	130 x 236 x 60	110(+1/-0.5) x 216(+1/-0.5)	2.3	109238

Information om tätningskomponenter

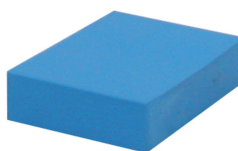
Tätningskomponenter



smörjmedel



HD-modul med Multidiameter™



HD solid kompensationsmodul

Detaljerad information finns på [roxtec.com](https://www.roxtec.com).

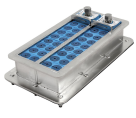


Förkonfigurerade genomföringskit

mm/kg



HD 16/10



HD 32/32



HD 32/20



HD 16/4



HD 32/8



HDLC/24+2



HD 32/41



HD 16/16

Titel	Konfigurering	Yttermått WxHxD	Öppningens mått w x h	Vikt	Art. nr
HD 16/10	2x (9.5-31.5), 8x (3.5-15.5)	83.8 x 236 x 60	64(+1/-0.5) x 216(+1/-0.5)	1.9	198297
HD 32/32	32x (3.5-15.5)	130 x 236 x 60	110(+1/-0.5) x 216(+1/-0.5)	3.4	112279
HD 32/20	16x (3.5-15.5), 4x (9.5-31.5)	130 x 236 x 60	110(+1/-0.5) x 216(+1/-0.5)	3.3	112278
HD 16/4	4x (9.5-31.5)	83.8 x 236 x 60	64(+1/-0.5) x 216(+1/-0.5)	2	193101
HD 32/8	8x (9.5-31.5)	130 x 236 x 60	110(+1/-0.5) x 216(+1/-0.5)	3.3	112276
HDLC/24+2	2x (24.0-54.0), 24x (3.5-16.5)	378 x 120 x 94	366(+1/-1) x 108(+1/-1)	6.2	173277
HD 32/41	1x (9.5-31.5), 16x (3.5-15.5), 24x (3.0-9.5)	130 x 236 x 60	110(+1/-0.5) x 216(+1/-0.5)	3.3	112280
HD 16/16	16x (3.5-15.5)	83.8 x 236 x 60	64(+1/-0.5) x 216(+1/-0.5)	1.9	193100

The product information provided by Roxtec does not release the purchaser of the Roxtec system, or part thereof, from the obligation to independently determine the suitability of the products for the intended process, installation and/or use.

Roxtec gives no guarantee for the Roxtec system or any part thereof and assumes no liability for any loss or damage whatsoever, whether direct, indirect, consequential, loss of profit or otherwise, occurred or caused by the Roxtec systems or installations containing components not manufactured by an authorized manufacturer and/or occurred or caused by the use of the Roxtec system in a manner or for an application other than for which the Roxtec system was designed or intended.

Roxtec expressly excludes any implied warranties of merchantability and fitness for a particular purpose and all other express or implied representations and warranties provided by statute or common law. User determines suitability of the Roxtec system for intended use and assumes all risk and liability in connection therewith. In no event shall Roxtec be liable for indirect, consequential, punitive, special, exemplary or incidental damages or losses.

The Roxtec products are offered and sold in accordance with the conditions of the Roxtec General Terms of Sales. The latest version of the Roxtec General Terms of Sales can be downloaded from <https://www.roxtec.com/en/about-us/about-roxtec/general-terms-of-sales/>

We reserve the right to make changes to the product and technical information without further notice. Any errors in print or entry are no claims for indemnity. The content of this publication is the property of Roxtec International AB and is protected by copyright.

This document was generated on: 2024-04-22